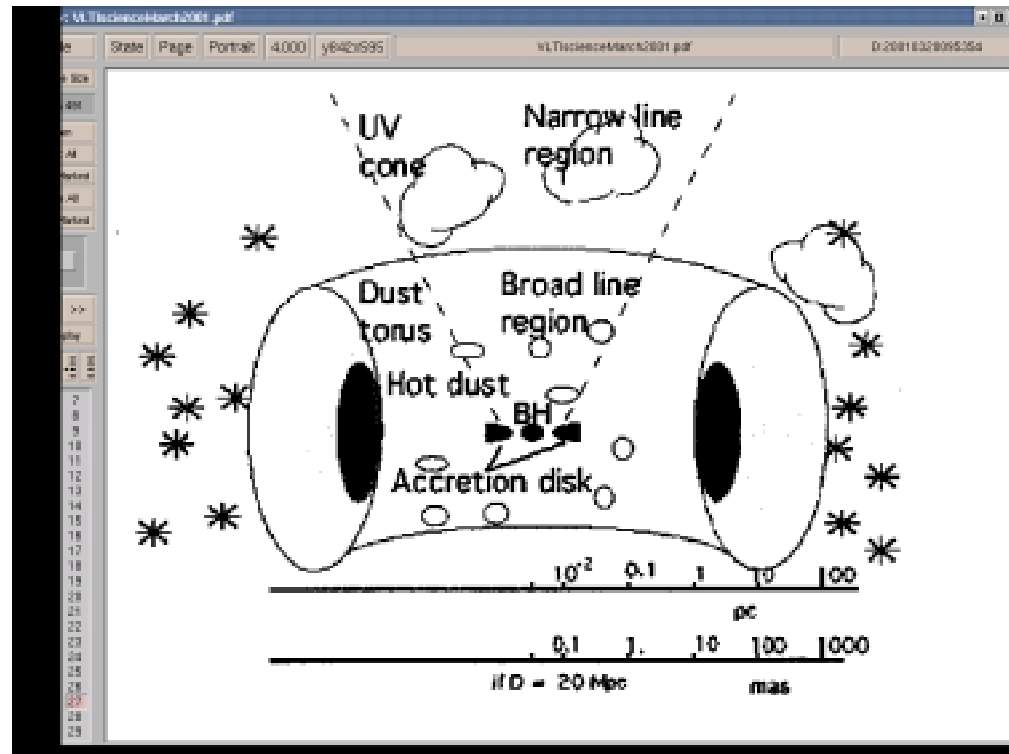


- Object type: AGN, Seyfert:NGC 1068
- Astrophysical motivation: spatial constraints on the dust tori

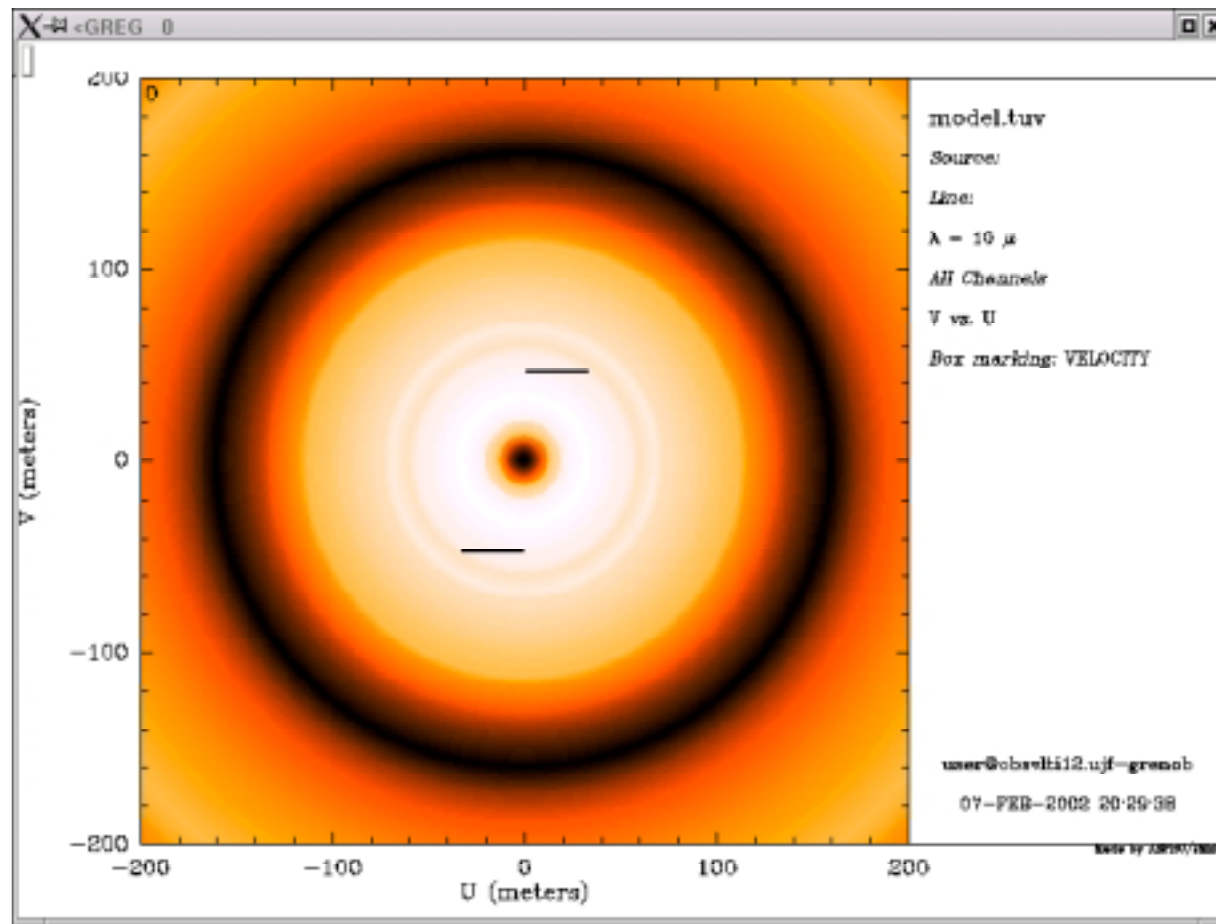


- VLTI => Access to the mas spatial scale

- Mag V = 10 => OK for AO
- The AGN has a Mag N=2.5 => OK for MIDI
 - K=8, H=9.2 and J=10.3 => OK for AMBER
- Baseline of the order of $25 \times \lambda$ (micron) to resolve 10 mas structures
- Number of nights: 2 nights with 2 different baselines, 6 hour exposure each

Example:

- Baseline: UT1-UT2
- Model: Ring seen face on, $R_{in}=10$ mas, $R_{out}=100$ mas



- Model fit: error of $\sim 10\%$ on R_{in}

